



SASWELL

SASWELL HVAC THERMOSTAT



Scan to download catalogue

SASWELL CONTROLS(HONGKONG) LIMITED
SHENZHEN SASWELL TECHNOLOGY INC.

 8675528906113

 info@saswell.com

www.saswell.com

CONTENT

Thermostat

Fan Coil thermostat.....	01
Modulating thermostat.....	09
DX thermostat.....	13
Heat pump thermostat.....	18

Sensor

Air quality sensor	24
Liquid temperature transmitter	27
Duct temperature and humidity	28
Outdoor wall-mounted temperature and humidity sensor	29
Pressure difference detection	30
Airflow velocity transmitter	31

Valve and Actuator

Small-Caliber High-Precision Valves & Actuators.....	32
--	----

The page features decorative geometric shapes in the corners. In the top right, there is a large, light gray, stylized 'W' or zigzag shape. In the bottom left, there are two overlapping, light gray, stylized 'V' or zigzag shapes pointing downwards and to the right.

SASWELL
FAN COIL
THERMOSTAT

SASWELL FAN COIL THERMOSTAT

SAS810FCT

FAN COIL THERMOSTAT

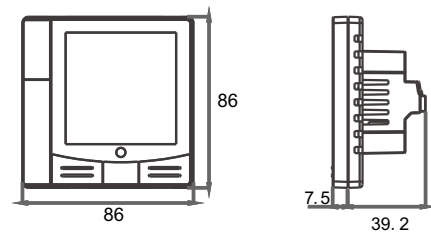
- Large LCD display with backlight
- 2 pipe or 4 pipe heating/cooling available
- Auto fan with adjustable 3-fan speed
- 7 days programmable
- Permanent user setting retention during power loss, no batteries are required
- Modbus communication



SPECIFICATION

Power Supply: 100-240VAC 50/60Hz
 Fan Relay Amps inductive: 8(5)A
 Heat/Cool Relay Amps inductive: 1(0.5)A
 Room Temperature Setting Range: 5°C to 35°C

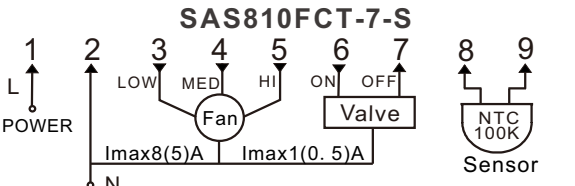
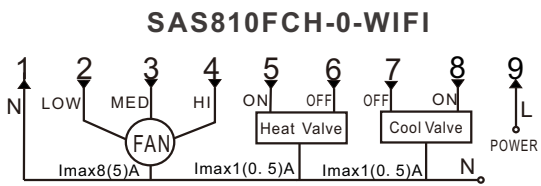
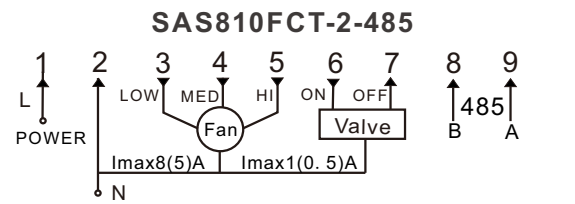
DIMENSION



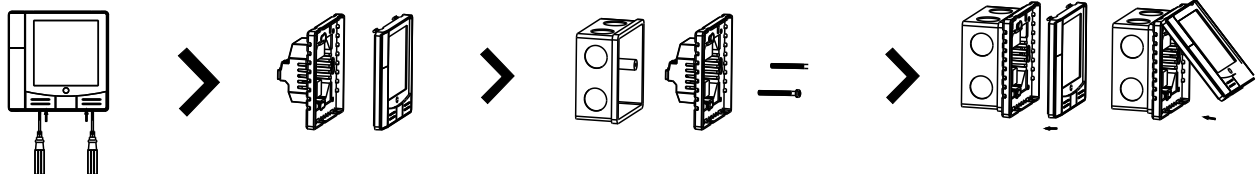
MODEL SELECTION

Model No.	Staging		Function and feature							Power	
	Heat/cool	Cool only	Pipe	3 speed fan	Programmable	Window card	Room Card	External Sensor	Modbus RTU	Wifi	220VAC
SAS810FCT-2-485	✓		2	✓					✓		✓
SAS810FCT-7-S	✓		2	✓	5+1+1 5+2 7			✓			✓
SAS810FCH-0-WIFI	✓		2/4	✓						✓	✓

WIRING DIAGRAM



INSTALLATION



SASWELL FAN COIL THERMOSTAT

SAS920FCT

FAN COIL THERMOSTAT

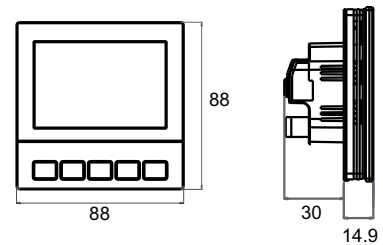
- Large LCD display with backlight
- Auto fan with adjustable 3-fan speed
- 7 days programmable
- Room Sensor or External sensor option
- 2 pipe or 4 pipe heating/cooling available
- Permanent user setting retention during power loss, no batteries are required



SPECIFICATION

Power Supply: 100-240VAC 50/60Hz
 Fan Relay Amps inductive: 8(5)A
 Heat/Cool Relay Amps inductive: 3(2)A
 Room Temperature Setting Range: 5°C to 35°C

DIMENSION

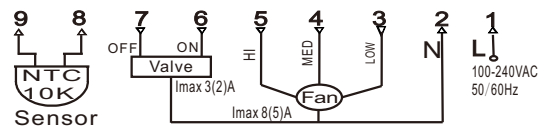


MODEL SELECTION

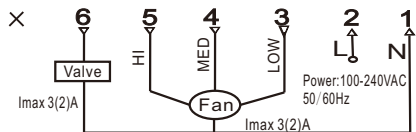
Model No.	Staging		Function and feature							Power	
	Heat/cool	Cool only	Pipe	3 speed fan	Programmable	Window card	Room Card	External Sensor	Modbus RTU	Wifi	220VAC
SAS920FCT-2-S	✓	✓	2	✓				✓			✓
SAS920FCT-7(2)	✓		2	✓	7 5+1+1						✓
SAS920FCT-7(4)	✓		4	✓	7 5+1+1						✓

WIRING DIAGRAM

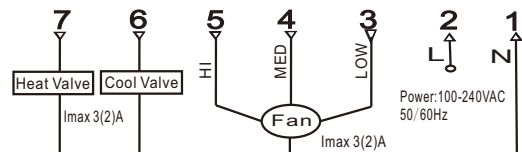
SAS920FCT-2-S



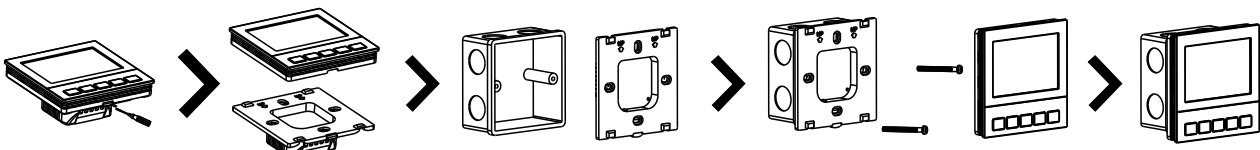
SAS920FCT-7(2)



SAS920FCT-7(4)



INSTALLATION



SASWELL FAN COIL THERMOSTAT

SAS 922FCT

FAN COIL THERMOSTAT

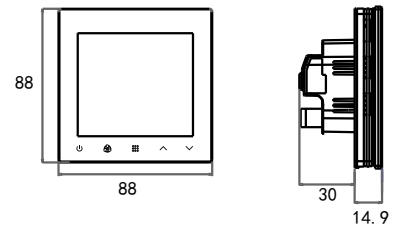
- Touch button easy for operation
- Heating, cooling and ventilation mode
- Auto fan with adjustable 3-fan speed
- Permanent user setting retention during power loss, no batteries are required
- Room Sensor or External sensor option
- Display shows both set points and room temperature simultaneously



SPECIFICATION

Power Supply: 100-240VAC 50/60Hz
 Fan Relay Amps inductive: 8(5)A
 Heat/Cool Relay Amps inductive: 3(2)A
 Room Temperature Setting Range: 5°C to 35°C

DIMENSION

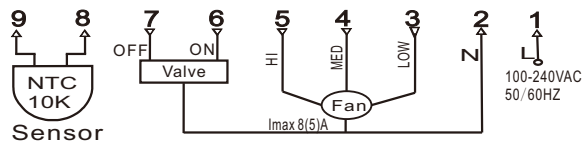


MODEL SELECTION

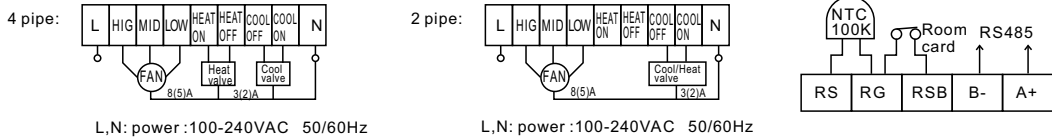
Model No.	Staging		Function and feature							Power	
	Heat/cool	Cool only	Pipe	3 speed fan	Programmable	Window card	Room Card	External Sensor	Modbus RTU	Wifi	220VAC
SAS922-FCT-CO-S	✓	✓	2	✓				✓			✓
SAS922XFCT-4-RCS-485	✓	✓	2/4	✓			✓	✓	✓		✓

WIRING DIAGRAM

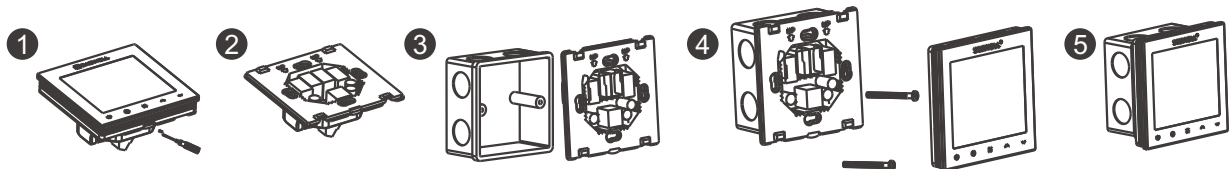
SAS922FCT-CO-S



SAS922XFCT-4-RCS-485



INSTALLATION



SASWELL FAN COIL THERMOSTAT

SAS 923FCT

FAN COIL THERMOSTAT

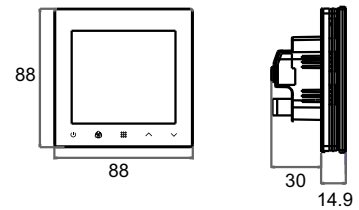
- Touch button, color display
- For fan coil or DX unit
- Modbus communication
- Heating and cooling, ventilation mode
- Auto fan with adjustable 3-fan speed
- Room Sensor or External sensor option
- Compressor delay



SPECIFICATION

Power Supply: 100-240VAC 50/60Hz
 Fan Relay Amps inductive: 8(5)A
 Heat/Cool Relay Amps inductive: 3(2)A
 Room Temperature Setting Range: 5°C to 35°C

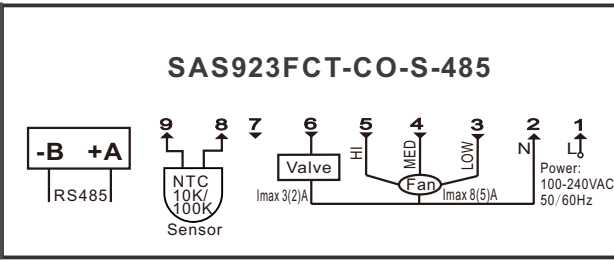
DIMENSION



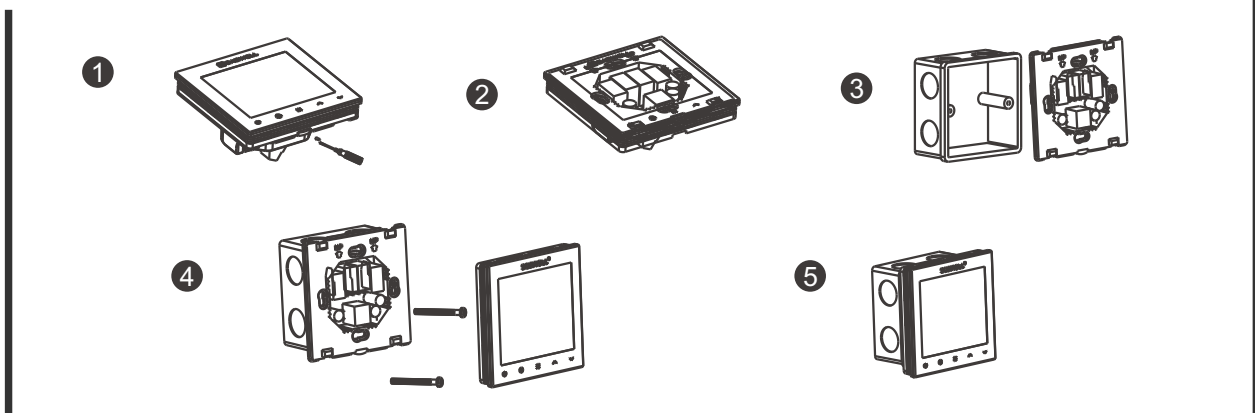
MODEL SELECTION

Model No.	Staging		Function and feature							Power	
	Heat/cool	Cool only	Pipe	3 speed fan	Programmable	Window card	Room Card	External Sensor	Modbus RTU	Wifi	220VAC
SAS923-FCT-CO-S-485	✓	✓	2	✓				✓	✓		✓

WIRING DIAGRAM



INSTALLATION



SASWELL FAN COIL THERMOSTAT

SAS T29MTW

FAN COIL THERMOSTAT

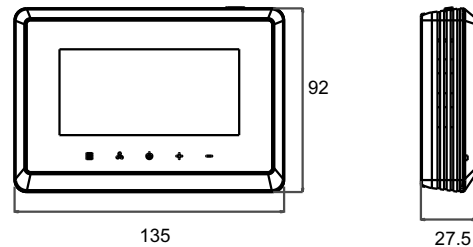
- Big screen and touch key for easy operation
- Color display
- Wall mount to easy hanging on wall
- Compatible for fan coil and DX unit
- Modbus communication
- Up to 2 stage heating and cooling



SPECIFICATION

Power Supply: 100-240VAC 50/60Hz
 24(18~30) VAC 50/60Hz
 Standby current: <1W
 Realy for fan: 8(5)A
 Temperature setting range: 0°C to 50°C
 Accuracy: 0.1°C
 Storage temperature: -10°C to 60°C
 Operation temperature: 0°C to 50°C

DIMENSION

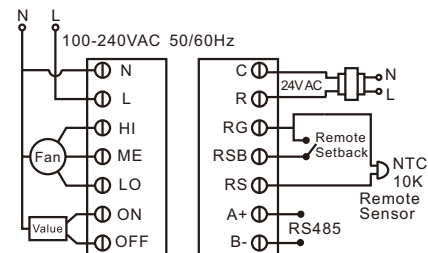


MODEL SELECTION

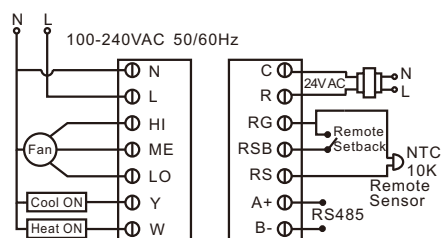
Model No.	Staging		Function and feature							Power	
	Heat/cool	Cool only	Pipe	3 speed fan	Programmable	Window card	Room Card	External Sensor	Modbus RTU	Wifi	220VAC
T29MTW-7-S-485	✓	✓	2/4	1/3	7	✓	✓	✓	✓		220VAC

WIRING DIAGRAM

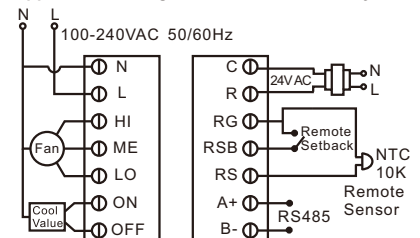
Application 6: 2 pipe/3 wire fan coil system



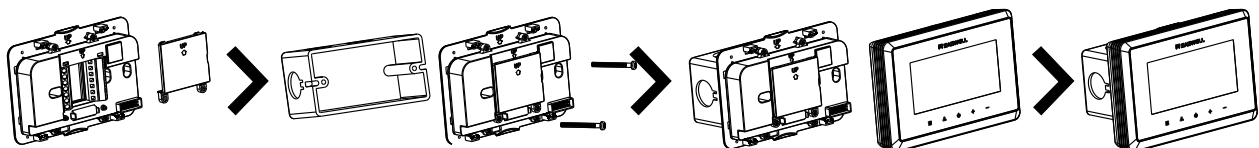
Application 7: 4 pipe/2 wire fan coil system



Application 8: Single cool / 3 wire fan coil system



INSTALLATION



SASWELL FAN COIL THERMOSTAT

SAS908FCT

FAN COIL THERMOSTAT

- Large LCD display with backlight.
- Set points and room temperature display simultaneously.
- Adjustable 3-speed fan with fan stop option.
- Manual change over.
- Never lose user setting in the event of power-off, no battery is required.
- Display temperature recalibrates.
- Sleep mode option.
- Inner Sensor or External sensor option.
- Maintains the temperature within the range of 0.5°C to the set point.



SPECIFICATION

Power Supply: 100-240VAC 50/60Hz

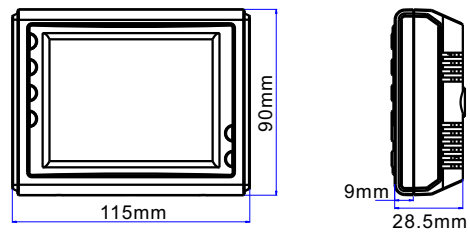
Fan Relay Amps inductive: 5(3)A

Heat/Cool Relay Amps inductive: 1(0.5)A

Color: White

Set point Temperature Range: 5°C to 35°C

DIMENSION

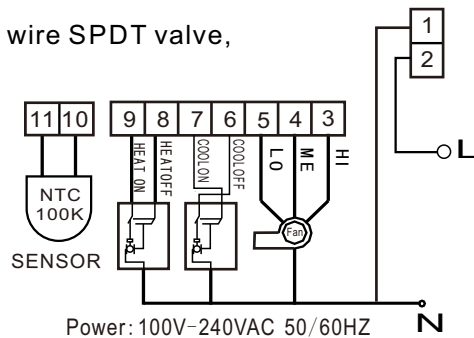


MODEL SELECTION

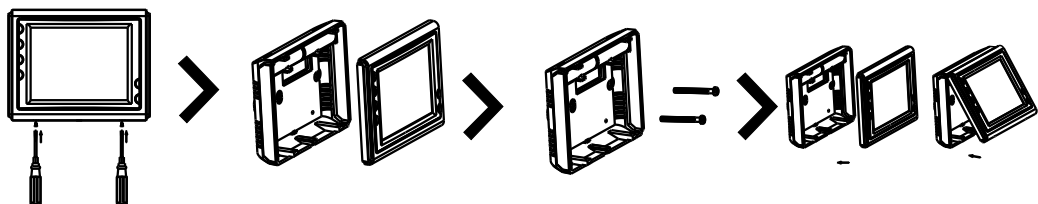
Model No.	Staging		Function and feature							Power	
	Heat/cool	Cool only	Pipe	3 speed fan	Programmable	Window card	Room Card	External Sensor	Modbus RTU	Wifi	220VAC
SAS908FCT-4B-S-CP	✓		4	✓				✓			✓

WIRING DIAGRAM

Heat/Cool 4 Pipe, 3 wire SPDT valve, fan coil system



INSTALLATION



SASWELL FAN COIL THERMOSTAT

SAS T15FCT

FAN COIL THERMOSTAT

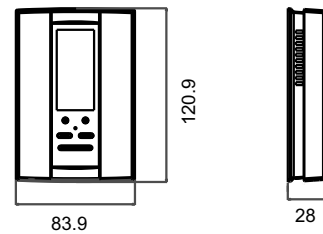
- New vertical design, crosswise installation or vertical installation
- Auto fan with adjustable 3-fan speed
- External sensor, Remote control
- 2 pipe or 4 pipe heating and cooling
- Permanent user setting retention during power loss, no batteries are required
- RS485 communication function



SPECIFICATION

Power Supply: 100-240VAC 50/60Hz
 Fan Relay Amps inductive: 8(5)A
 Heat/Cool Relay Amps inductive: 0.5°C
 Accuracy: ±0.5°C
 Set point Temperature Range: 5°C to 60°C

DIMENSION



MODEL SELECTION

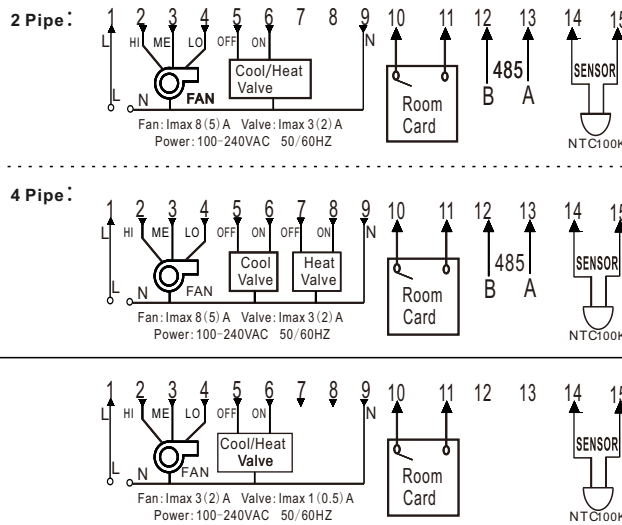
Model No.	Staging		Function and feature							Power	
	Heat/cool	Cool only	Pipe	3 speed fan	Programmable	Window card	Room Card	External Sensor	Modbus RTU	Wifi	220VAC
T15FCT	✓		2/4	✓			✓	✓			✓
T15FCT-485	✓		2/4	✓			✓	✓	✓		✓
T15FCT-2-RS	✓		2	✓			✓	✓			✓

WIRING DIAGRAM

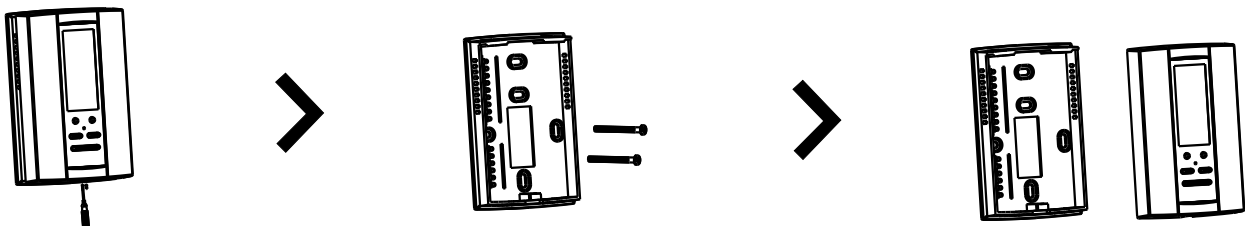
T15FCT

T15FCT-485

T15FCT-2-RS



INSTALLATION



SASWELL FAN COIL THERMOSTAT

SAS 922XMTW

FAN COIL THERMOSTAT

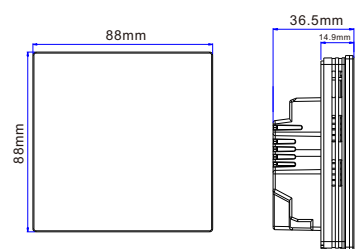
- LED and touch control, more fashion design
- 7 days programmable
- External sensor, Remote control
- DX or fan coil system optional
- Permanent user setting retention during power loss, no batteries are required
- RS485 communication function
- Tuya smart WIFI control
- Alexa and google assistant voice control



SPECIFICATION

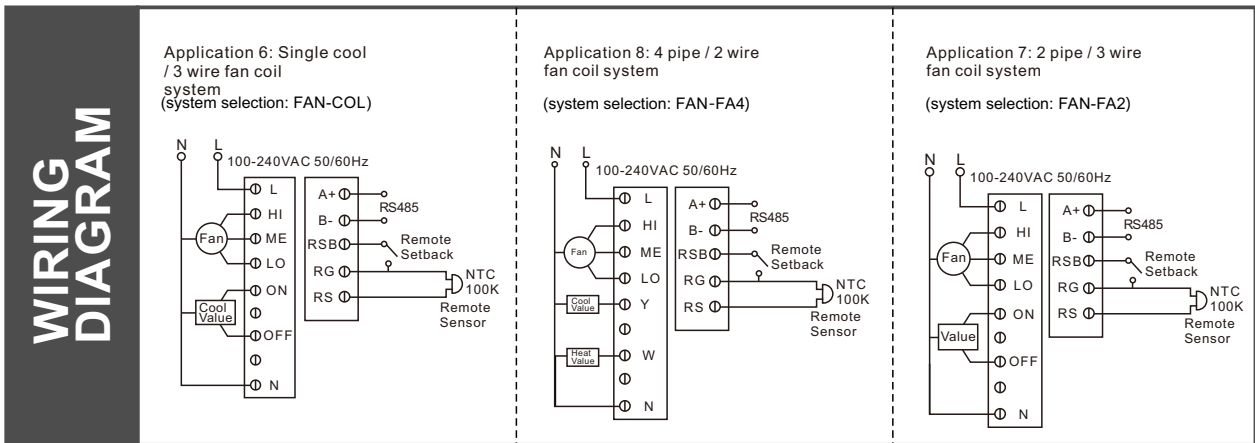
Power Supply: 100-240VAC 50/60Hz
 Temperature setting range: 5°C~35°C
 Temperature setting accuracy: 0.5°C
 Temperature display range: 0°C~50°C
 Temperature accuracy: 0.1°C
 Output: Fan Relay Amps 8(5)A

DIMENSION



MODEL SELECTION

Model No.	Staging		Function and feature								Power	
	Heat/cool	Cool only	Pipe	3 speed fan	Programmable	Window card	Room Card	External Sensor	Modbus RTU	Wifi	220VAC	
SAS922XMTW-7S-WIFI(TY)-485	✓	✓	2/4	✓	✓		✓	✓	✓	✓	✓	



SASWELL FAN COIL THERMOSTAT

SAS 965FCT

FAN COIL THERMOSTAT

- Color display and touch control, more fashion design
- 7 days programmable
- Auto fan with adjustable 3-fan speed
- DX or fan coil system optional
- Permanent user setting retention during power loss, no batteries are required
- RS485 communication function
- Display shows both set points and room temperature simultaneously

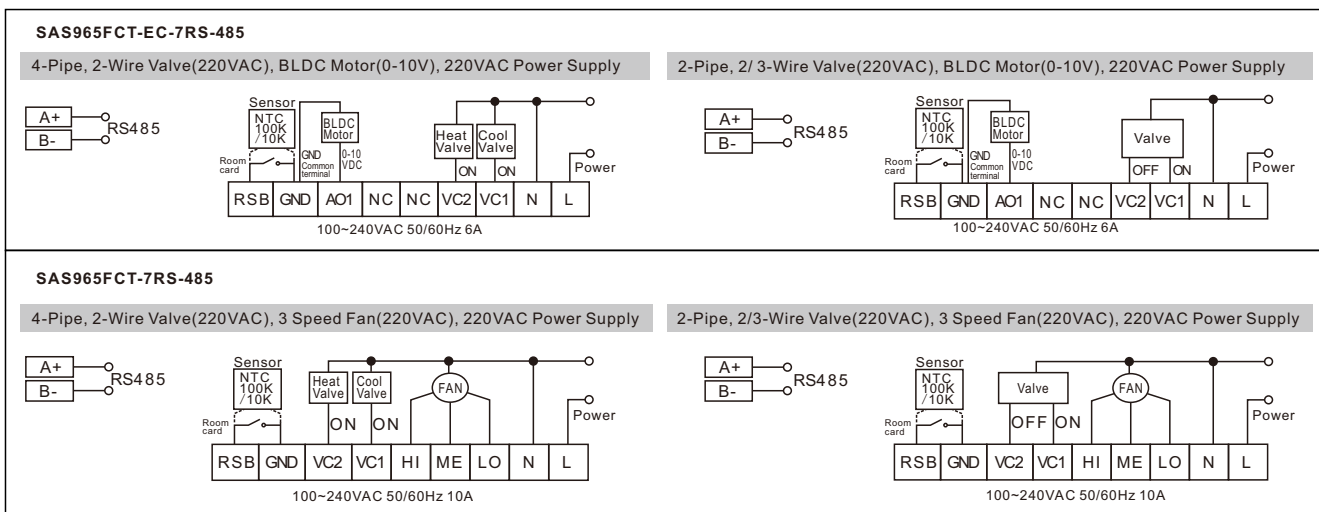


SPECIFICATION

Power Supply: 100-240VAC 50/60Hz
 Temperature setting range: 10°C~30°C
 Temperature setting accuracy:0.5°C
 Temperature display range:0°C ~50°C
 Temperature accuracy: 0.1°C
 Output:Fan Relay Amps 8(5)A

MODEL SELECTION

Model No.	Staging		Function and feature								Power
	Heat/cool	Cool only	Pipe	Speed fan	Programmable	Window card	Room card	External Sensor	Modbus RTU	Wifi	220VAC
SAS965FCT-EC-7RS-485	✓	✓	ON/OFF Valve 2-Pipe /4-Pipe	0-10V EC Fan	✓	✓	✓	✓	✓	Optional	✓
SAS965FCT-7RS-485	✓	✓	ON/OFF Valve 2-Pipe /4-Pipe	AC Fan	✓	✓	✓	✓	✓	Optional	✓



The page features large, light gray geometric shapes in the corners. In the top right, there is a large, stylized 'W' or zigzag shape. In the bottom left, there are two overlapping, downward-pointing chevron shapes.

SASWELL
MODULATING
THERMOSTAT

SASWELL MODULATING THERMOSTAT

SAS 920PIT ROOM THERMOSTAT

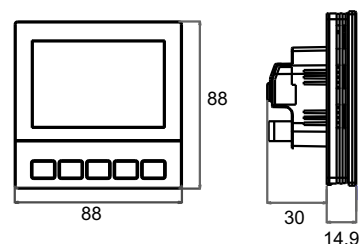
- Large LCD display with backlight
- Auto fan with adjustable 3-fan speed
- Temperature adjustments are simple with the large up-down arrows
- Low voltage power supply
- Maintains the temperature to within 0.5 degree set point
- Permanent user setting retention during power loss, no batteries are required
- 0 to 10VDC or 4 to 20mA cool output



SPECIFICATION

Power Supply: 18-30VAC 50/60Hz
 Fan Relay Amps inductive: 8(5)A
 Modulating output Voltage: 4 to 20mA or 0 to 10VDC
 Room Temperature Setting Range: 5°C to 35°C

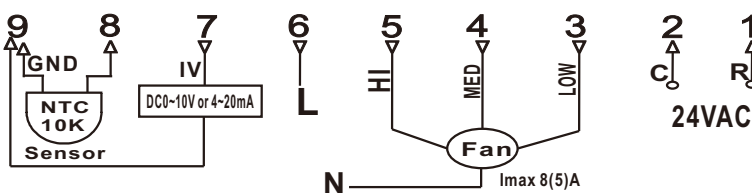
DIMENSION



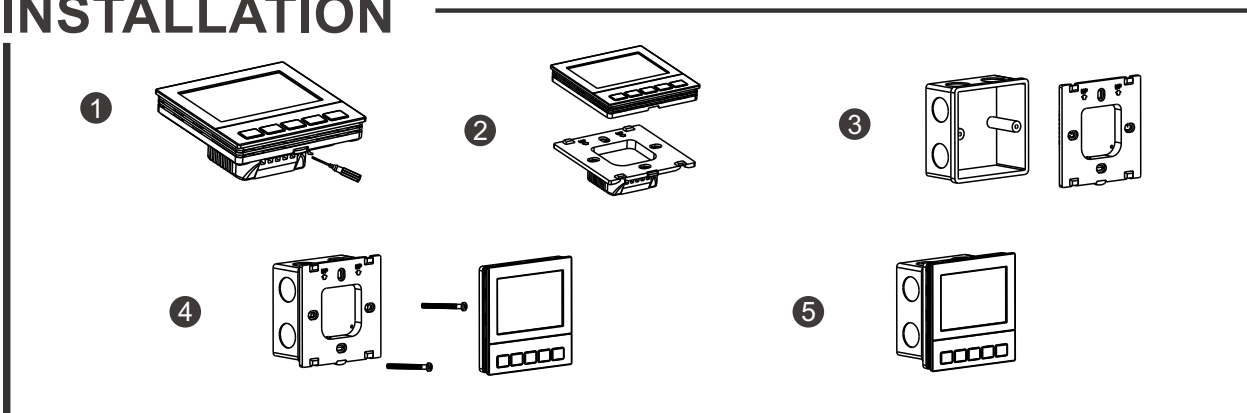
MODEL SELECTION

Model No.	Staging		Function and feature							
	Heat/cool	cool only	Pipe	Fan	Electric Heater	Room Card	Programmable	External Sensor	Modbus RTU	Power
SAS920PIT-CO-F3		✓	2	3				✓		24VAC

WIRING DIAGRAM



INSTALLATION



SASWELL MODULATING THERMSTOTAT

SAS922PIT

ROOM THERMOSTAT

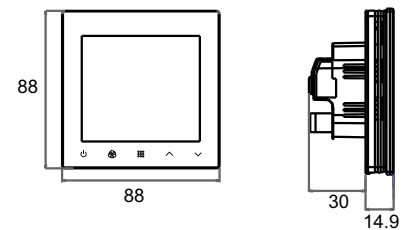
- Touch button easy for operation
- 7 days programmable
- Heating, cooling and ventilation mode
- Auto fan with adjustable 3-fan speed
- Permanent user setting retention during power loss, no batteries are required
- Room Sensor or External sensor option
- Display shows both set points and room temperature simultaneously
- Modbus communication
- Accuracy modulating control (4 to 20mA or 0 to 10VDC) system



SPECIFICATION

Power Supply: 100-240VAC 50/60Hz
 Fan Relay Amps inductive: 8(5)A
 Heat/Cool Relay Amps inductive: 3(2)A
 Room Temperature Setting Range: 5°C to 35°C

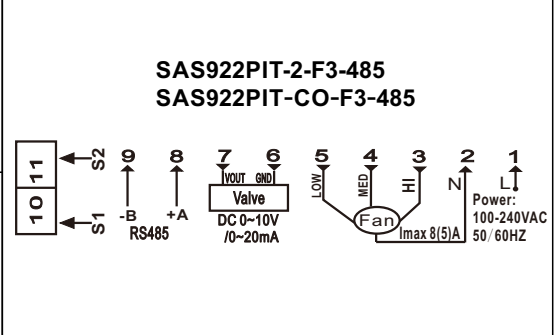
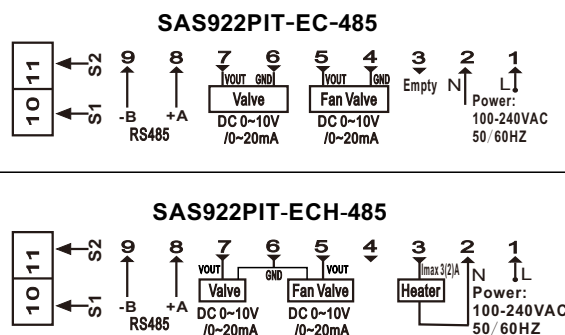
DIMENSION



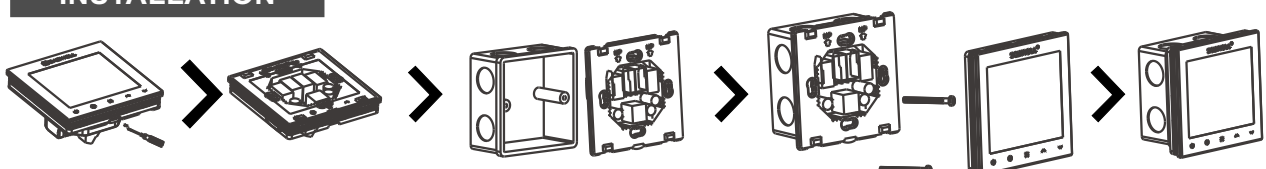
MODEL SELECTION

Model No.	Staging		Function and feature							
	Heat/cool	cool only	Pipe	Fan	Electric Heater	Room Card	Programmable	External Sensor	Modbus RTU	Power
SAS922PIT-CO-F3-485		✓	2	3		✓	7	✓	✓	220V
SAS922PIT-EC-485		✓	2	EC motor		✓	7	✓	✓	220V
SAS922PIT-2-F3-485	✓		2	3		✓	7	✓	✓	220V
SAS922PIT-ECH-485	✓		2	EC motor	✓	✓	7	✓	✓	220V

WIRING DIAGRAM



INSTALLATION



SASWELL MODULATING THERMOSTAT

SAS908PIT ROOM THERMOSTAT

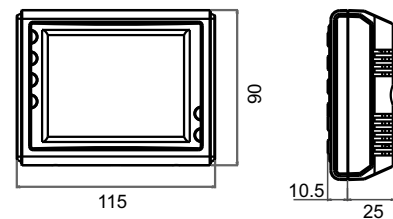
- Large LCD display
- The screen displays the set temperature, the room temperature simultaneously
- Permanent user setting and program setting retention during power loss
- Special energy saving mode-external input from window contact or hotel card-key overrides
- The temperature setting to installer defined heating and cooling temperatures
- 0 to 10VDC or 0 to 20mA heat and cool outputs
- 3-speed fan control
- Fahrenheit or Celsius display capability



SPECIFICATION

Power Supply: 18-30VAC 50/60Hz
 Fan relay amps inductive: 5(3)A
 Heat relay amps inductive: 1(0.5)A
 Modulating output voltage: 0 to 20mA or 0 to 10VDC
 Room temperature setting range: 5°C to 35°C (41°F to 95°F)
 Accuracy: ±0.2°F or ±0.1°C

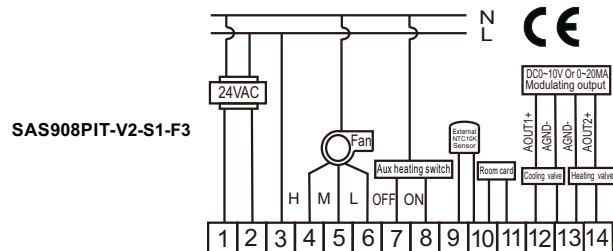
DIMENSION



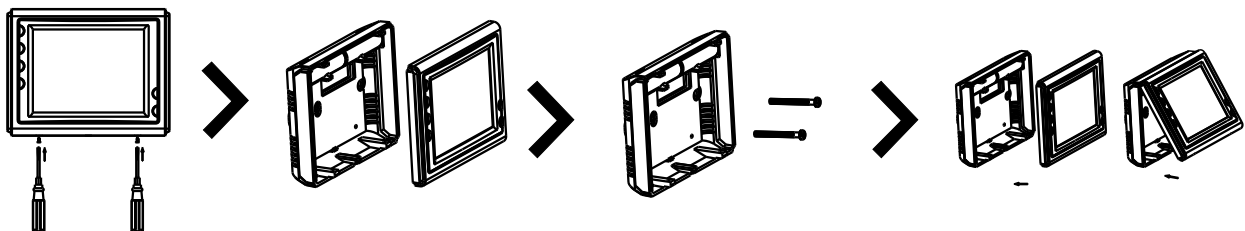
MODEL SELECTION

Model No.	Staging		Function and feature							
	Heat/cool	cool only	Pipe	Fan	Electric Heater	Room Card	Programmable	External Sensor	Modbus RTU	Power
SAS908PIT-V1-S1-F3	✓		2	3	✓	✓		✓		24VAC
SAS908PIT-V2-S1-F3	✓		4	3	✓	✓		✓		24VAC

WIRING DIAGRAM



INSTALLATION



SASWELL MODULATING THERMOSTAT

SAS T15PIT

ROOM THERMOSTAT

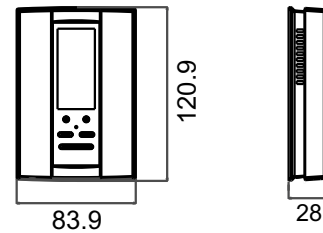


- New vertical design, crosswise installation or vertical installation
- Auto fan with adjustable 3-fan speed
- External sensor, Remote control
- 2 pipe or 4 pipe heating and cooling
- Permanent user setting retention during power loss, no batteries are required
- RS485 communication function

SPECIFICATION

Power Supply: 100-240VAC 50/60Hz
 Fan Relay Amps inductive: 8(5)A
 Heat/Cool Relay Amps inductive: 0.5°C
 Accuracy: $\pm 0.5^{\circ}\text{C}$
 Set point Temperature Range: 5°C to 60°C

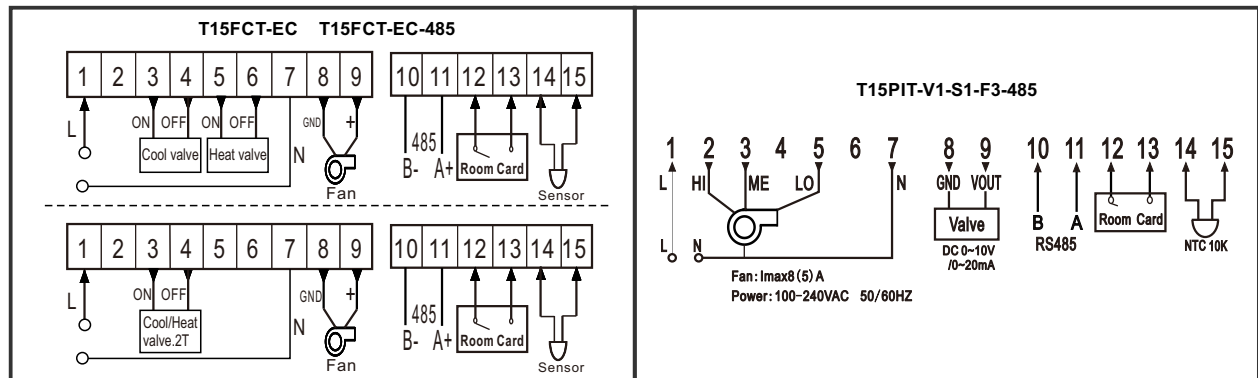
DIMENSION



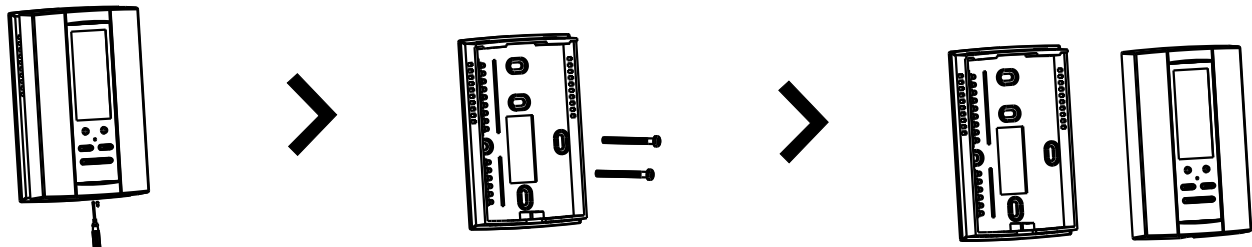
MODEL SELECTION

Model No.	Staging		Function and feature							
	Heat/cool	cool only	Pipe	Fan	Electric Heater	Room Card	Programmable	External Sensor	Modbus RTU	Power
T15PIT-V1-S1-F3-485		✓	2	3		✓		✓	✓	220VAC
T15FCT-EC-485	✓		2/4	EC motor	✓	✓		✓	✓	220VAC
T15FCT-EC	✓		2/4	EC motor	✓	✓		✓		220VAC

WIRING DIAGRAM



INSTALLATION



SASWELL FAN COIL THERMOSTAT

SAS 965PIT ROOM THERMOSTAT

- Color display and touch control, more fashion design
- 7 days programmable
- Auto fan with adjustable 3-fan speed
- DX or fan coil system optional
- Permanent user setting retention during power loss, no batteries are required
- RS485 communication function
- Display shows both set points and room temperature simultaneously



SPECIFICATION

Power Supply: 100-240VAC 50/60Hz

Temperature setting range: 10°C~30°C

Temperature setting accuracy: 0.5°C

Temperature display range: 0°C~50°C

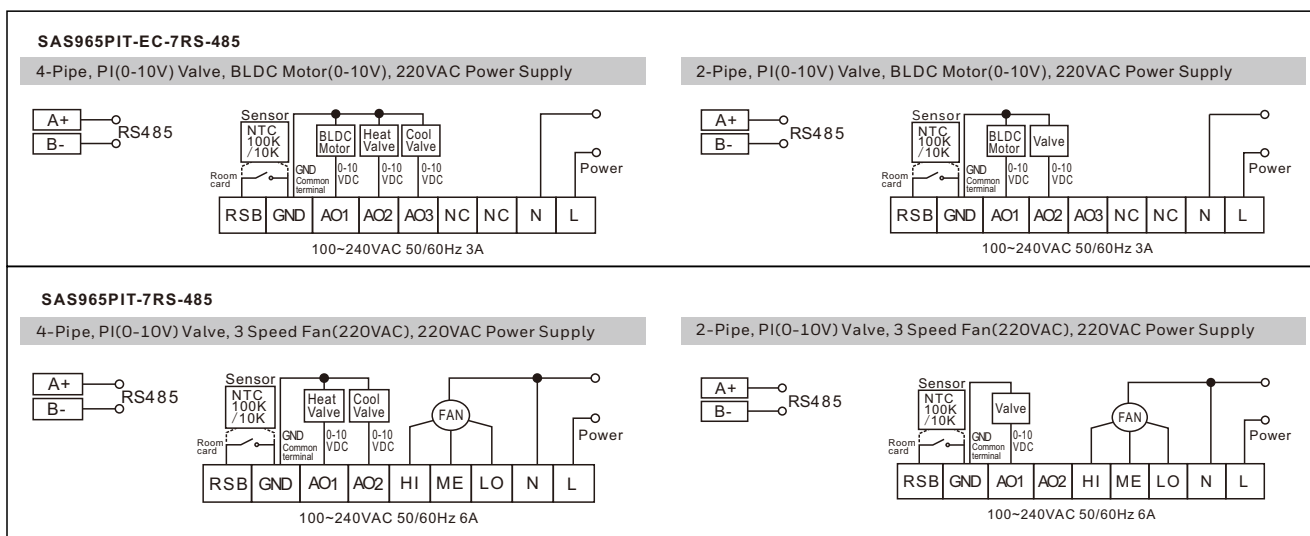
Temperature accuracy: 0.1°C

Output: Fan Relay Amps 8(5)A

MODEL SELECTION

Model No.	Staging		Function and feature								Power
	Heat/cool	Cool only	Pipe	Speed fan	Programmable	Window card	Room card	External sensor	Modbus RTU	Wifi	220VAC
SAS965PIT-EC-7RS-485	✓	✓	0-10V Valve 2-Pipe /4-Pipe	0-10V EC Fan	✓	✓	✓	✓	✓	Optional	✓
SAS965PIT-7RS-485	✓	✓	0-10V Valve 2-Pipe /4-Pipe	AC Fan	✓	✓	✓	✓	✓	Optional	✓

WIRING DIAGRAM





SASWELL
DX
THERMOSTAT

SASWELL DX THERMOSTAT

SAS 921SLP

ROOM THERMOSTAT

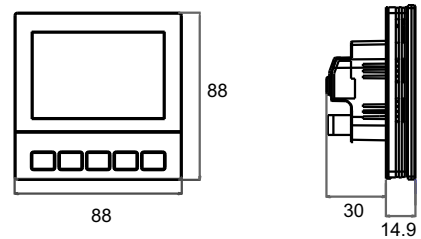
- Large LCD display with backlight
- Auto fan with adjustable 3-fan speed
- 7 days programmable
- Permanent user setting retention during power loss, no batteries are required
- Compressor delay



SPECIFICATION

Power Supply: 100-240VAC 50/60Hz
 Fan Relay Amps inductive: 8(5)A
 Compressor Relay Amps inductive: 8(5)A
 Set point Temperature Range: 5°C to 35°C
 Color: White

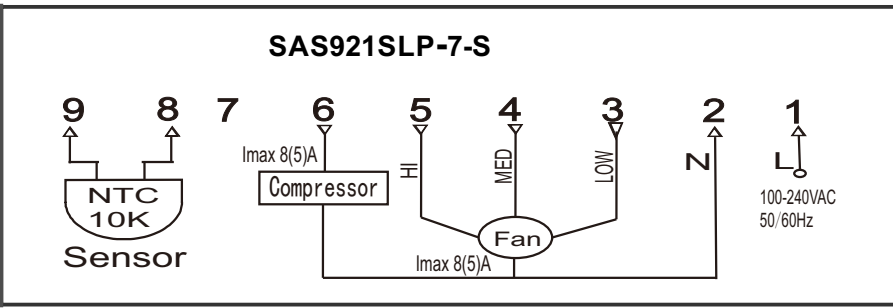
DIMENSION



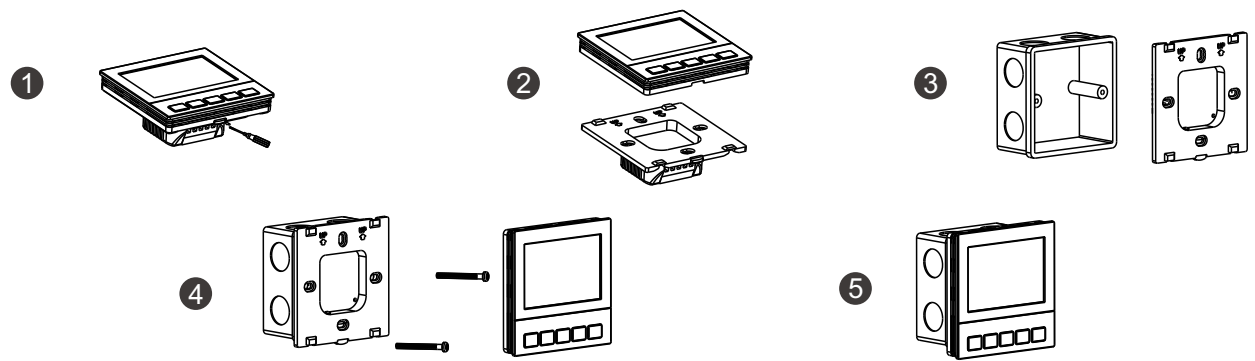
MODEL SELECTION

Model No.	Staging		Function and feature					
	Heat/cool	cool only	Fan speed	Room Card	Programmable	External Sensor	Modbus RTU	Power
SAS921SLP-7-S		1	3		7	✓		220/24VAC

WIRING DIAGRAM



INSTALLATION



SASWELL DX THERMOSTAT

SAS 923FCT

ROOM THERMOSTAT

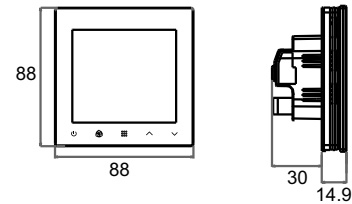
- Touch button, color display
- For fan coil or DX unit
- Modbus communication
- Heating and cooling, ventilation mode
- Auto fan with adjustable 3-fan speed
- Room Sensor or External sensor option
- Compressor delay



SPECIFICATION

Power Supply: 100-240VAC 50/60Hz
 Fan Relay Amps inductive: 8(5)A
 Heat/Cool Relay Amps inductive: 3(2)A
 Room Temperature Setting Range: 5°C to 35°C

DIMENSION

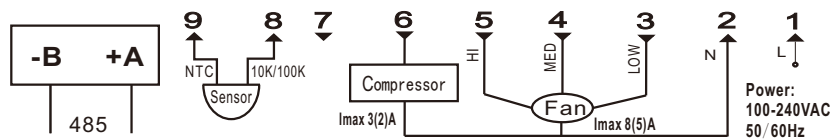


MODEL SELECTION

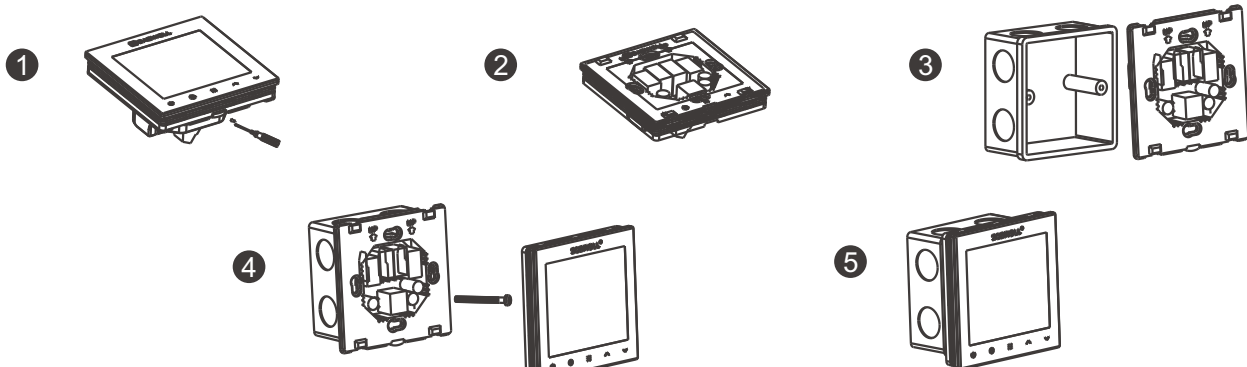
Model No.	Staging		Function and feature					
	Heat/cool	Cool only	Fan speed	Room Card	Programmable	External Sensor	Modbus RTU	Power
SAS923FCT-CO-S-485		1	3			✓	✓	220VAC

WIRING DIAGRAM

SAS923FCT-CO-S-485



INSTALLATION



SASWELL DX THERMOSTAT

SAS T29MTW

ROOM THERMOSTAT

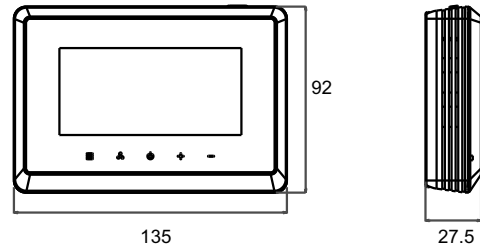
- Big screen and touch key for easy operation
- Color display
- Wall mount to easy hanging on wall
- Compatible for fan coil and DX unit
- Modbus communication
- Up to 2-stage of heating and cooling



SPECIFICATION

Power Supply: 100-240VAC 50/60Hz
 24(18~30) VAC 50/60Hz
 Standby current: <1W
 Realy for fan: 8(5)A
 Temperature setting range: 0°C to 50°C
 Accuracy: 0.1°C
 Storage temperature: -10°C to 60°C
 Operation temperature: 0°C to 50°C

DIMENSION

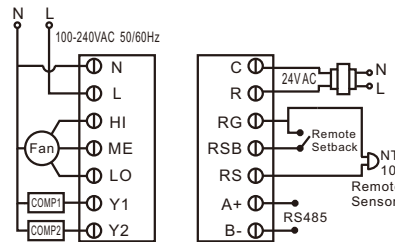


MODEL SELECTION

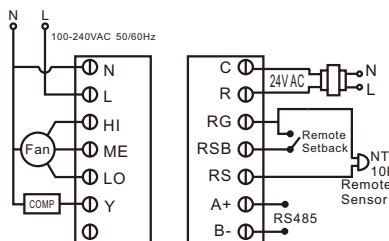
Model No.	Staging			Function and feature				
	Heat/cool	cool only	Fan speed	Room Card	Programmable	External Sensor	Modbus RTU	Power
T29MTW-7-S-485	2 heat / 2 cool	2/1	1/3		7	✓	✓	220/24VAC

WIRING DIAGRAM

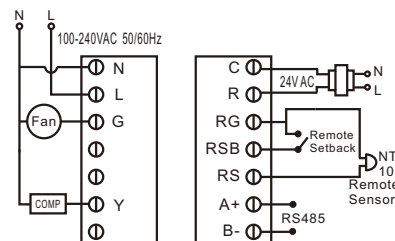
Application 1: 3 speed fan/two compressor system



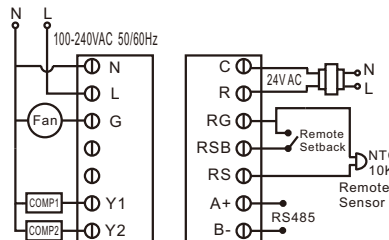
Application 2: 3 speed fan/single compressor system



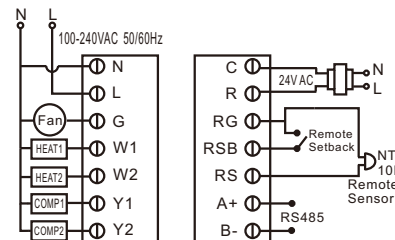
Application 3: single speed fan/single compressor system



Application 4: single speed fan/two compressor system



Application 5: single speed fan /2 heat/cool system



SASWELL DX THERMOSTAT

SAS 908MTW

ROOM THERMOSTAT

- Large LCD display with backlight(Green or blue)
- Set points and room temperature display simultaneously.
- Adjustable 3-speed fan with fan stop option.
- Manual change over.
- Never lose user setting in the event of power-off, no battery is required.
- Display temperature recalibrates.
- Room Card and Window Card option.
- Inner Sensor or External sensor option.
- Modbus communication



SPECIFICATION

Power Supply: 100-240VAC 50/60Hz

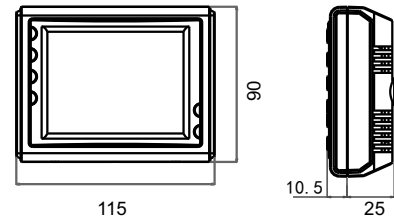
Fan Relay Amps inductive: 8(5)A

Heat/Cool Relay Amps inductive: 1(0.5)A

Color: White

Set point Temperature Range: 5°C to 35°C

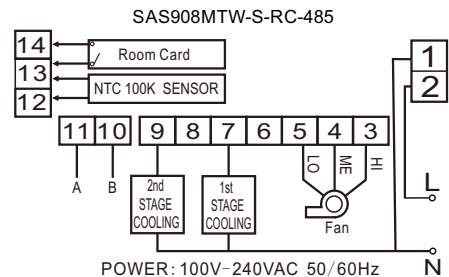
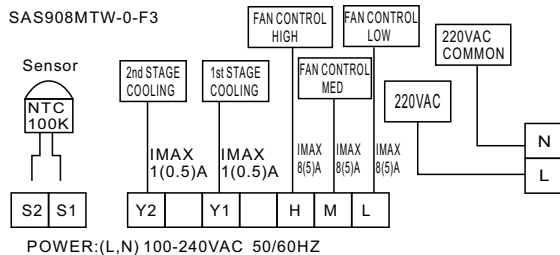
DIMENSION



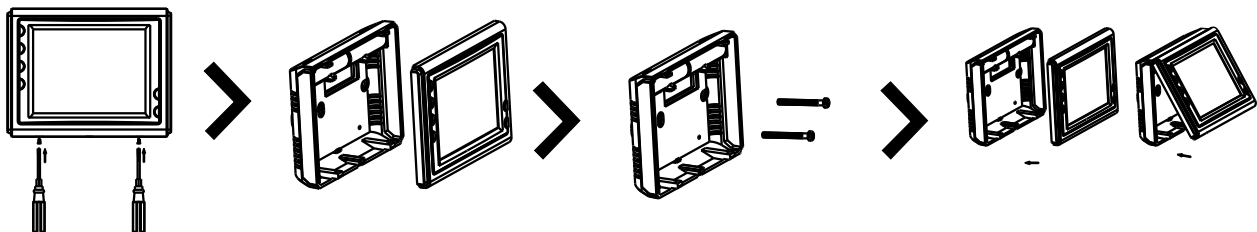
MODEL SELECTION

Model No.	Staging			Function and feature				
	Heat/cool	cool only	Fan speed	Room Card	Programmable	External Sensor	Modbus RTU	Power
SAS908MTW-S-RC-485		2	3	✓		✓	✓	220/24VAC
SAS908STW-0-S	1H/1C		1			✓		24VAC
SAS908MTW-0-S	2H/2C	✓	1			✓		24VAC
SAS908MTW-0-F3		2	3			✓		220VAC

WIRING DIAGRAM



INSTALLATION



SASWELL DX THERMOSTAT

SAS 922XMTW

ROOM THERMOSTAT

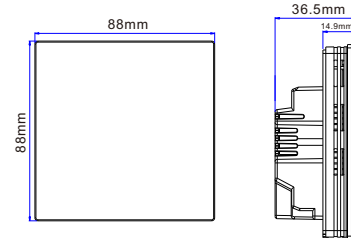
- LED and touch control, more fashion design
- 7 days programmable
- External sensor, Remote control
- DX or fan coil system optional
- Permanent user setting retention during power loss, no batteries are required
- RS485 communication function
- Tuya smart WIFI control
- Alexa and google assistant voice control



SPECIFICATION

Power Supply: 100-240VAC 50/60Hz
 Temperature Setting Range: 5°C~35°C
 Temperature Setting Accuracy: 0.5°C
 Temperature Display Range: 0°C~50°C
 Temperature Accuracy: 0.1°C
 Output: Fan Relay Amps 8(5)A

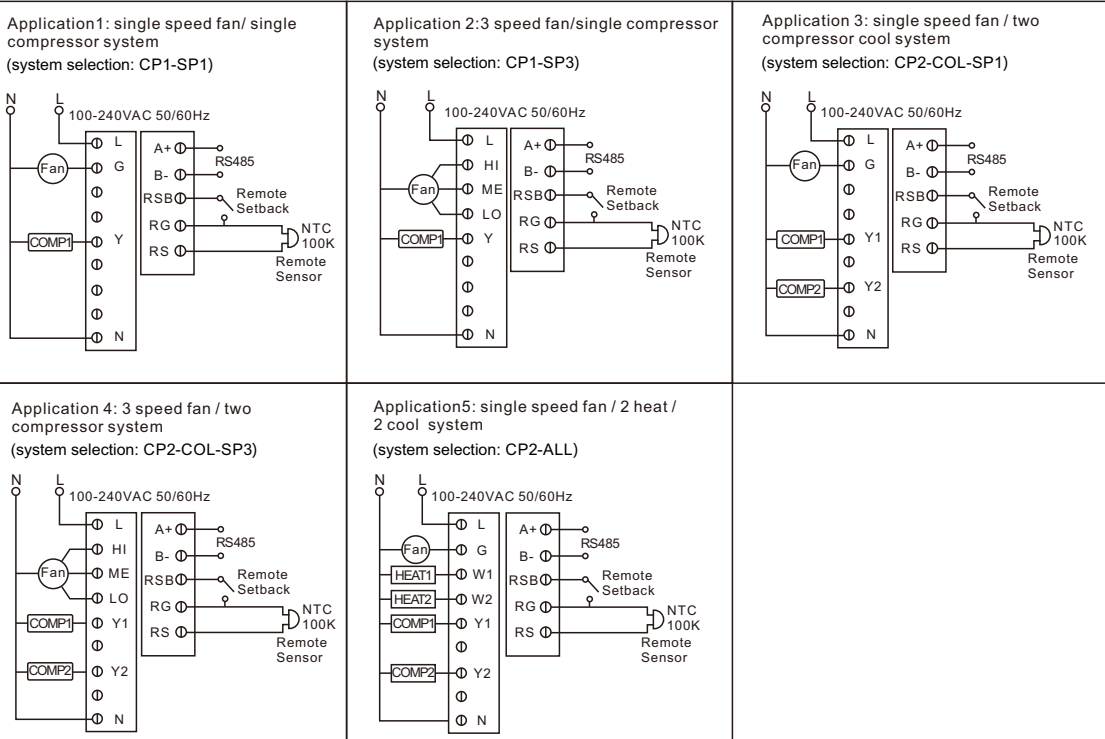
DIMENSION



MODEL SELECTION

Model No.	Staging		Function and feature								Power	
	Heat/cool	Cool only	Pipe	3 speed fan	Programmable	Window card	Room Card	External Sensor	Modbus RTU	Wifi	220VAC	
SAS922XMTW-7S-WIFI(TY)-485	✓	✓	2/4	✓	✓		✓	✓	✓	✓	✓	

WIRING DIAGRAM



SASWELL FAN COIL THERMOSTAT

SAS 965SLP

ROOM THERMOSTAT

- Color display and touch control, more fashion design
- 7 days programmable
- Auto fan with adjustable 3-fan speed
- DX or fan coil system optional
- Permanent user setting retention during power loss, no batteries are required
- RS485 communication function
- Display shows both set points and room temperature simultaneously

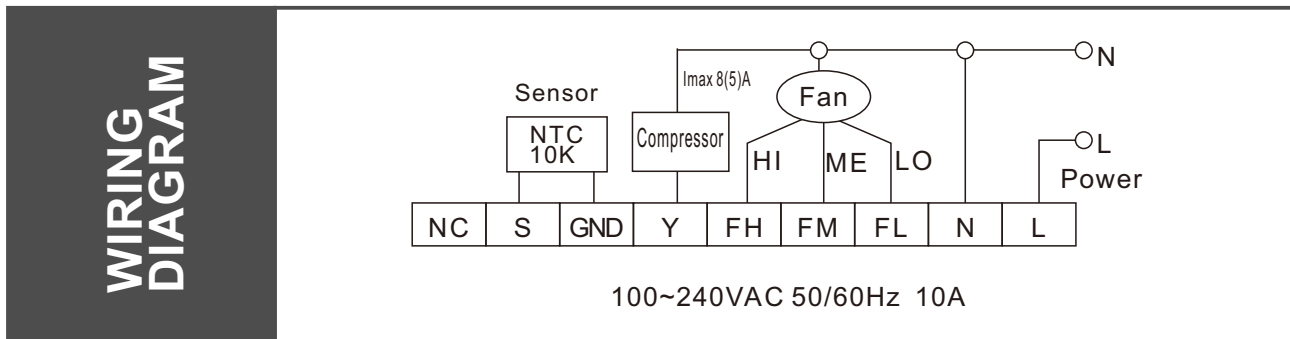


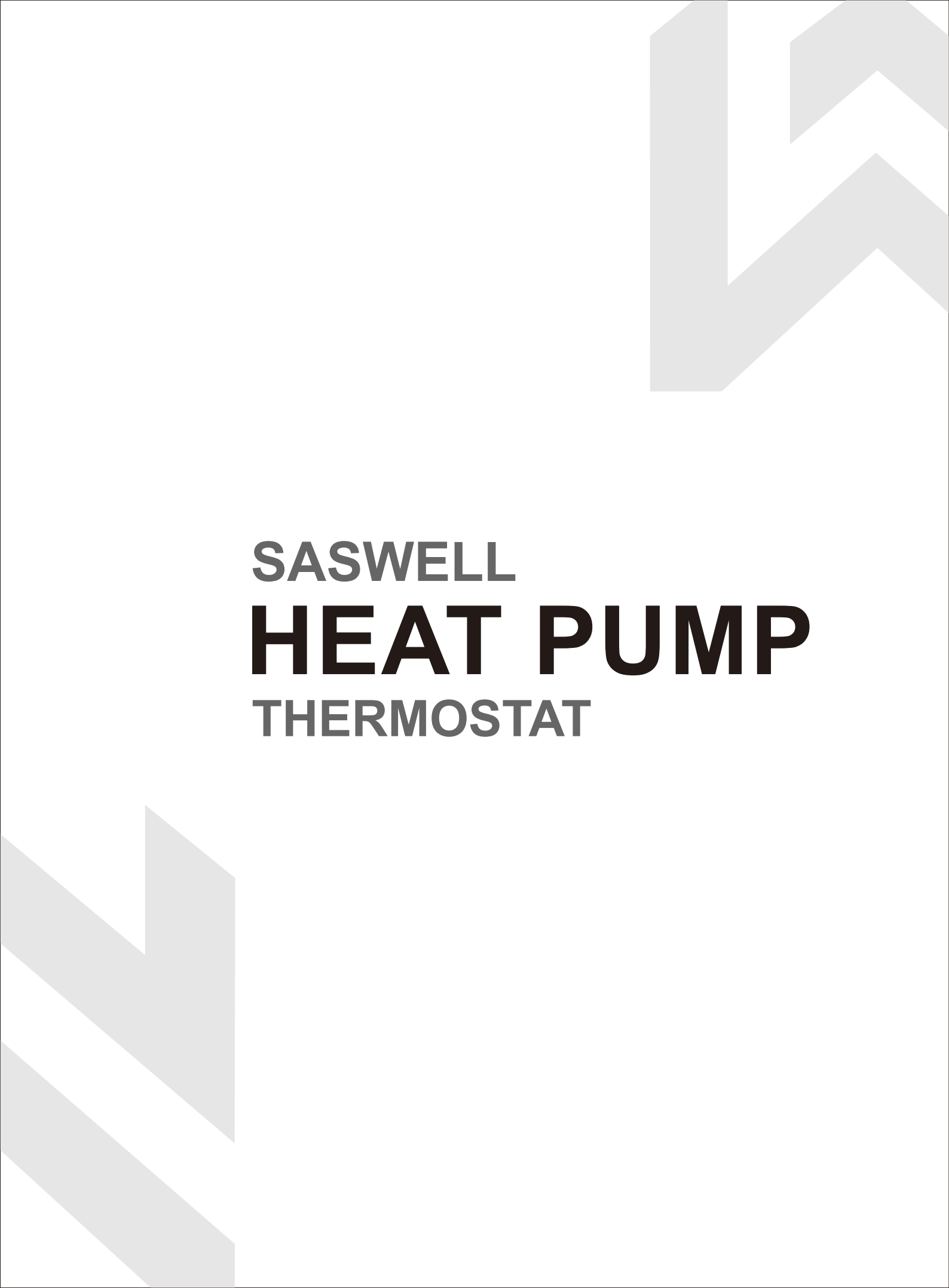
SPECIFICATION

Power Supply: 100-240VAC 50/60Hz
 Temperature setting range: 10°C~30°C
 Temperature setting accuracy: 0.5°C
 Temperature display range: 0°C ~50°C
 Temperature accuracy: 0.1°C
 Output: Fan Relay Amps 8(5)A

MODEL SELECTION

Model No.	Staging	Function and feature								Power
	Cool only	Pipe	3 speed fan	EC Motor Fan	Programmable	Room Card	External Sensor	Modbus RTU	Wifi	220VAC
SAS965SLP-7-F3-S	✓		✓		✓		✓			✓



The page features large, light gray geometric shapes in the corners. In the top right, there is a large, stylized 'W' shape. In the bottom left, there are two overlapping, downward-pointing chevron shapes. The text is centered in the middle of the page.

SASWELL
HEAT PUMP
THERMOSTAT

SASWELL HEAT PUMP THERMOSTAT

SAS900STK ROOM THERMOSTAT

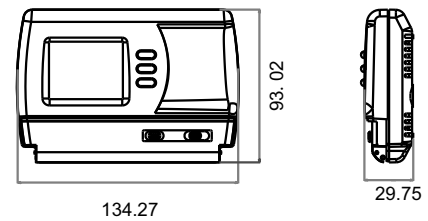
- Large LCD display with backlight, continuous backlight option
- Simultaneous heat and cool set point storage
- Fan switch with ON and AUTO functions
- Air Filter change Indicator
- Low Battery Indicator.
- Programmable available
- Display of room temperature, set temperature and current time simultaneously
- Permanent user setting retention during power loss. No batteries are required



SPECIFICATION

Power Supply: 20VAC-30VAC 50-60HZ or Battery powered
 Terminal Load: 1.0A per terminal, 3.0A maximum total load
 Set Point Temp. Range: 64 °F to 86°F (18 °C to 30 °C).
 Accuracy: ± °F or ± 0.5 °C
 Color: White

DIMENSION

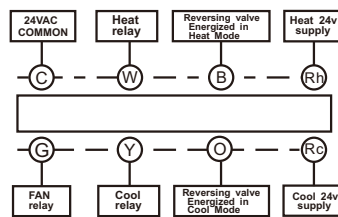


MODEL SELECTION

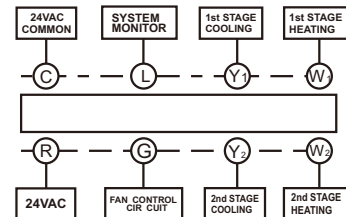
Model No.	Function and feature			Power Supply	
	Heat/cool	Fan speed	Programmable	24VAC	Battery
SAS900STK-0	1/1	Auto/on	Non	✓	✓
SAS900STK-2	1/1	Auto/on	5+2	✓	✓
SAS900MTK-0	2/2	Auto/on	Non	✓	✓

WIRING DIAGRAM

SAS900STK-2



SAS900MTK-0



INSTALLATION



SASWELL HEAT PUMP THERMOSTAT

SAS T21STK ROOM THERMOSTAT

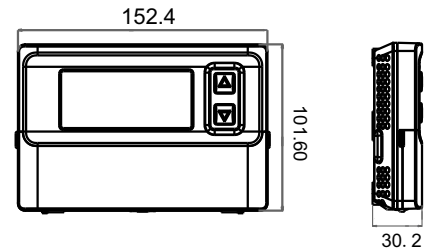
- Large LCD display with backlight, continuous backlight option
- Simultaneous heat and cool set point storage
- Fan switch with ON and AUTO functions
- Air Filter change Indicator
- Low Battery Indicator.
- Programmable available
- Display of room temperature, set temperature and current time simultaneously
- Permanent user setting retention during power loss. No batteries are required
- Temperature calibration



SPECIFICATION

Power Supply: 20VAC-30VAC 50-60HZ or Battery powered
 Terminal Load: 1.0A per terminal, 3.0A maximum total load
 Set Point Temp. Range: 45 °F to 90 °F (7 °C to 32 °C).
 Accuracy: ±1 °F or ±0.5 °C
 Color: White

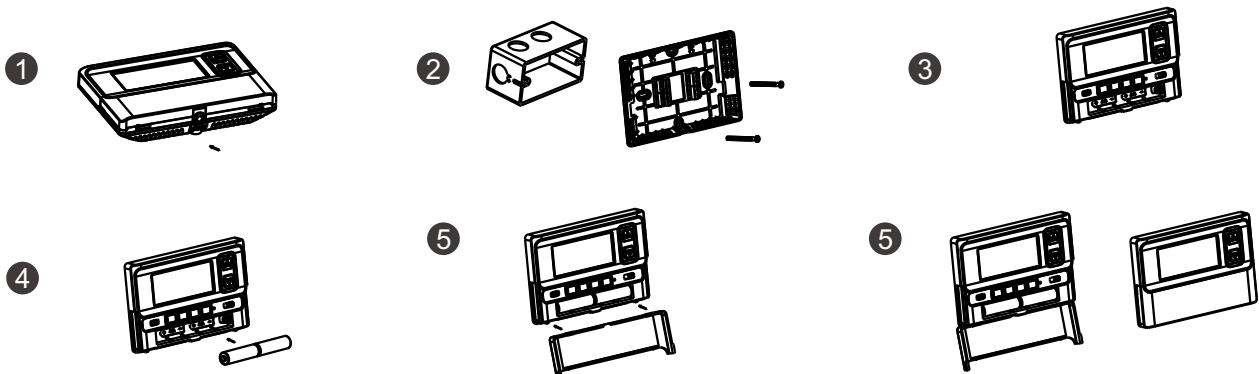
DIMENSION



MODEL SELECTION

Model No.	Function and feature			Power Supply	
	Heat/cool	Fan speed	Programmable	24VAC	Battery
T21STK-0	1/1	Auto/on	Non	✓	✓
T21STK-2	1/1	Auto/on	5+2	✓	✓
T21HTW-0	2/2	Auto/on	Non	✓	✓

INSTALLATION



SASWELL HEAT PUMP THERMOSTAT

SAS T18BUTW

ROOM THERMOSTAT

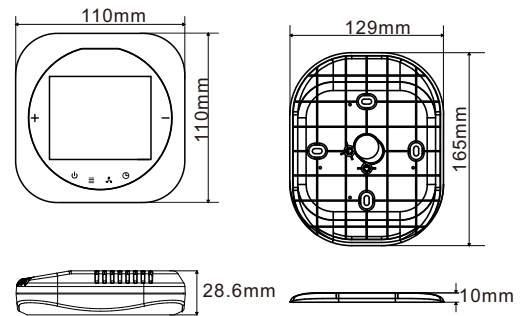
- Big screen and touch key for easy operation
- Color display
- Wall mount to easy hanging on wall
- Fan switch with ON and AUTO functions
- Programmable available
- Up to 3-Stage of Heating and 2-Stage of Cooling
- Temperature calibration
- APP remote control
- Display of room temperature, set temperature and current time simultaneously



SPECIFICATION

Power Supply : 18-30VAC 50/60Hz
 IP Rating : IP21
 Temperature setting range : 41°F~95°F
 Temperature setting accuracy: 1°F
 Temperature display range: 32°F~122°F
 Temperature accuracy : 0.1°F
 Operation temperature range : 32°F~122°F
 Output Relay Load I_{max} 24V/(0.5A)
 Wifi Frequency : 2.4GHz

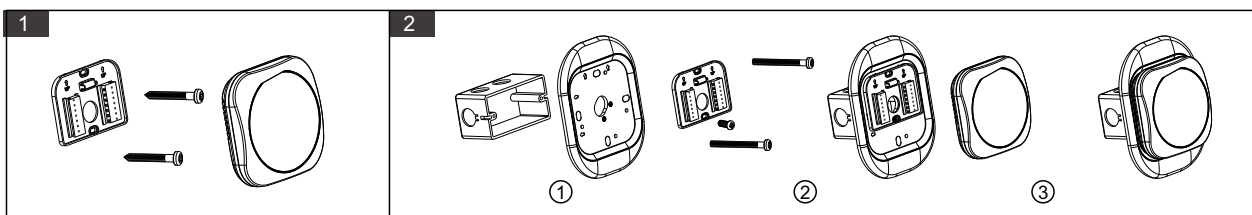
DIMENSION



MODEL SELECTION

Model No.	Function and feature			Power Supply	
	Heat/cool	Fan speed	Programmable	24VAC	Battery
T18BUTW-7-WIFI(TY)	3H/2C	Auto/on	✓	✓	

INSTALLATION





SASWELL
AIR QUALITY
SENSOR

SASWELL AIR QUALITY SENSOR

AQC 912

AIR QUALITY SENSOR

- Big screen and touch key for easy operation
- Color display
- Wall mount to easy hanging on wall
- RS485 communication function
- Real time accurate detect carbon dioxide (Co2), formaldehyde (HCHO), volatile organic compounds (TVOC), particulate matter(PM2.5), temperature and humidity
- Adjust the display brightness automatically according to the actual environment.



SPECIFICATION

Power input:24VDC/AC

CO2:400~2000ppm

TVOC: 0~6.000mg/m³

HCHO: 0~1.00mg/m³

PM2.5: 1~999 ug/m³

Display: 2.8-inch color screen

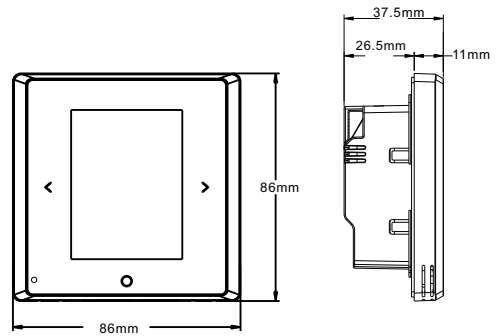
Wireless communication: WiFi(2.4G)

Temperature and humidity detection accuracy:0.1, 1%

Temperature and humidity detection range:-10°C~+50°C,0-95%RH

External temperature detection range:-10°C~+50°C(NTC 100K)

RS485 communication interface: RTU format MODBUS protocol,two-wire system



MODEL SELECTION

Model No.	Function and feature					Power
	Wifi	Modbus RTU	External Sensor	Screen display	Touch button	24VAC
AQC912XPCTH-485-WIFI(24V)	✓	✓	✓	✓	✓	✓
AQC912PCTH-485(24V)		✓	✓			✓

SASWELL AIR QUALITY SENSOR

AQC 18X

AIR QUALITY SENSOR

- Big screen and touch key for easy operation
- Color display
- Wall mount to easy hanging on wall
- RS485 communication function
- Real time accurate detect carbon dioxide (CO₂), formaldehyde (HCHO), volatile organic compounds (TVOC), particulate matter(PM_{2.5}), temperature and humidity
- Adjust the display brightness automatically according to actual environment.



SPECIFICATION

Power input:24VDC/AC

CO₂:400~2000ppm

TVOC: 0~6.000mg/m³

HCHO: 0~1.00mg/m³

PM_{2.5}: 1~999 ug/m³

Display: 2.8-inch color screen

Wireless communication: Tuya WiFi(2.4G)

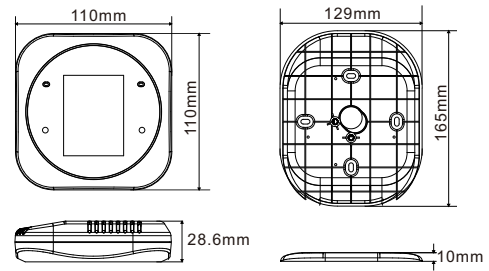
Temperature and humidity detection accuracy:0.1, 1%

Temperature and humidity detection range:-10°C~+50°C, 0-95%RH

External temperature detection range:-10°C~+50°C(NTC 100K)

RS485 communication interface: RTU format MODBUS protocol, two-wire system

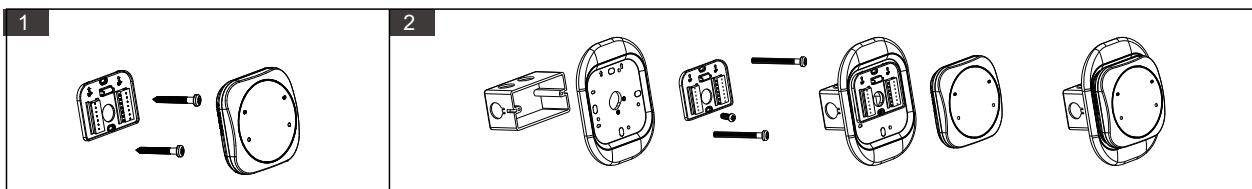
DIMENSION



MODEL SELECTION

Model No.	Function and feature					Power
	Wifi	Modbus RTU	External Sensor	Screen display	Touch button	24VAC
AQC18X-485 -WIFI(TY)	✓	✓	✓	✓	✓	✓
AQC18X-485		✓	✓			✓

INSTALLATION



SASWELL AIR QUALITY TRANSMITTER

AQC 915 PIPELINE GAS DETECTION

Industrial-grade particle concentration transmitter, waterproof shell design and pipeline installation method. Anti-interference circuit design, can with stand strong electromagnetic interferences PM2.5, PM10, and PM1.0 are output simultaneously. Using Unique dual-frequency data acquisition and automatic calibration technology, high consistency Adopt advanced laser anti-attenuation technology to ensure long-term stability of the equipment.

SPECIFICATION

CO sensor

Power Supply: 10~30VDC(0~10V, 24V power supply only)
 Output Signal: 485, 4~20mA, 0~5V, 0~10V, WIFI, LORA
 Accuracy: ±5ppm or ±10%
 Zero Drift: ±3ppm
 Stability: ≤2% of signal value per month
 Measurement Range: 0~1000ppm, 0~2000ppm

CO2 sensor

Power Supply: 10~30VDC(0~10V, 24V power supply only)
 Output Signal: 485, 4~20mA, 0~5V, 0~10V
 Accuracy: ±(50ppm+ 3%F·S) (25°C)@400-5000ppm
 Zero Drift: ±3ppm
 Stability: <2%F·S
 Non-linearity: <1%F·S
 Measurement Range: 0~5000ppm



PM2.5 , PM10 sensor

Power Supply: 10~30VDC(0~10V, 24V power supply only)
 Output Signal: 485, 4~20mA, 0~5V, 0~10V
 PM2.5 Accuracy: Particle counting efficiency:50%@0.3μm , 98%@>=0.5μm.
 PM2.5 Accuracy: ±3%FS(@0~100μg/m3, 25°C, 50%RH)
 Measurement Range: 0~1000μg/m3

MODEL SELECTION

AQC-			Gas Detection
	915-	Waterproof Duct-mounted Housing	
		CO-	CO Transmitter
		CO2-	CO2 Transmitter
		PM-	Particulate Matter Transmitter
		485-	RS485(ModBus)
		I20-	4~20mA
		V05-	0~5V
		V10-	0~10V
			N No screen
			D With screen

LIQUID TEMPERATURE TRANSMITTER

STH 717W

LIQUID TEMPERATURE TRANSMITTER

- Suitable for automated control systems liquid temperature measurement in duct, including other hot and cold water applications.
- Real-time monitoring of duct liquid temperature.
- Uses high-reliability imported digital sensors and a specially designed high-stability conversion circuit.
- Features a split-type installation with a dedicated pipe sleeve for easy and quick setup.
- Wireless output function and temperature & humidity controller customization available.
- Optional LCD screen for display.

SPECIFICATION

Measurement range: 0~50°C/-20~80°C/0~100°C option, 0~99%RH

Power input: 24VDC/AC

Output signal: 0-10V/4-20mA, Modbus RS-485

Accuracy: $\pm 0.5^{\circ}\text{C}$ (15°C~25°C); $\pm 1^{\circ}\text{C}$ (-30°C~15°C, 25°C~60°C);

$\pm 1.5^{\circ}\text{C}$ (80°C~100°C)

Power consumption: I_{max} 0.5W

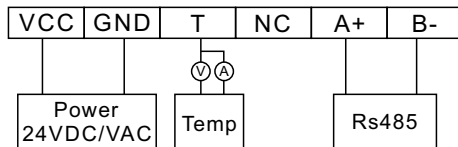
Wiring standard: cross-sectional area < 1.5mm

Installation: pipeline installation

IP rating: IP65



WIRING DIAGRAM



MODEL SELECTION

STH-			Temperature and Humidity Detection
	717W-		Liquid Temperature
		AVRS-	4-20mA, 0-10V, RS485
		N	No screen
		D	With screen

DUCT TEMPERATURE AND HUMIDITY

STH 717F

DUCT TEMPERATURE AND HUMIDITY

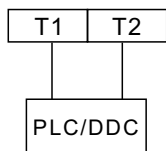
- For temperature&humidity detection in building automation systems, public space monitoring and alerts,HVAC systems, Smart homes, pharmaceutical and electronics industries, food processing, clean rooms, precision testing areas,underground parking facilities and etc.
- Utilize 32-bit high-performance microcontroller with an advanced digital sensor and controller design.
- Output options include 0-10V, 4-20mA, and RS485 communication, with customization available for wireless output and temperature & humidity control integration.
- Optional LCD display available.

SPECIFICATION

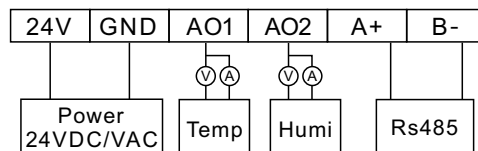
Measurement range:0~50°C/-40~60°C
 /0-100°C option,0~100%RH
 Power input: 24VDC/AC
 Output signal: 0-10V/4-20mA,RS-485
 Accuracy: ±0.5°C, ±3%RH
 Power consumption: I_{max} 0.5W
 IP rating: IP65
 Dimension: 119 x 97 x 268mm



WIRING DIAGRAM



Resistance type wiring diagram



Transmission type wiring diagram

MODEL SELECTION

STH-			Temperature and Humidity Detection
	717F-		Duct Temperature and Humidity
		AVRS-	4-20mA, 0-10V, RS485
			N No screen
			D With screen

OUTDOOR WALL-MOUNTED TEMPERATURE AND HUMIDITY SENSOR

STH 717

OUTDOOR WALL-MOUNTED TEMPERATURE AND HUMIDITY SENSOR

- Utilize 32-bit high-performance microcontroller with an advanced digital sensor and controller design.
- Real-time monitoring of air temperature and humidity.
- Output 4-20mA/0-10V/RS485.
- Optional 1.3inch、2.8inch LCD Display.

SPECIFICATION

Measurement range: 0~50°C/-40~60°C/0-100°C option, 0~100%RH
 Power input: 24VDC/AC(Default), AC220V(Custmized)
 Output signal: 0-10V/4-20mA, Modbus RS-485
 Accuracy: ±0.5°C, ±3%RH
 Power consumption: I_{max} 0.5W
 IP rating: IP65

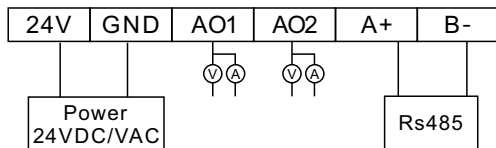


No screen



With screen

WIRING DIAGRAM



AO1、AO2: 4-20mA/0-10V signal output terminal

MODEL SELECTION

STH-			Temperature and Humidity Detection
	717-		Outdoor Wall-mounted Temperature and Humidity
		AVRS-	4-20mA, 0-10V, RS485
			N No screen
			D With screen

PRESSURE DIFFERENCE DETECTION

SPD716 PRESSURE DIFFERENCE DETECTION

- For HVAC systems, energy management, VAV and fan control, environmental pollution control, static pressure monitoring in pipelines, clean room pressure monitoring, fume hood control, oven pressurization, and furnace ventilation control.
- Capable of detecting differential pressure or gauge pressure, ensuring precise measurement for building pressurization and airflow control.
- Rotating split-type wall-mounted installation bracket, asy and quick installation.
- Optional 1.3-inch LCD display available.

SPECIFICATION

Measurement range: 0~50/0~100/±50/±100Pa

Power input: 24VDC/AC

Output signal: 0-10V/4-20mA and RS485

Accuracy: ±1%F.S

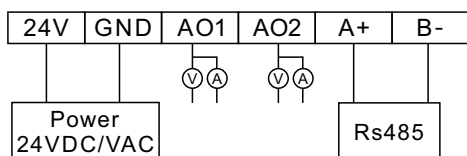
Power consumption: ≤1w

IP rating: IP65



No screen

WIRING DIAGRAM



With screen

MODEL SELECTION

SPD-			Pressure Difference Detection
	716-		Pressure Difference housing
		AVRS-	4-20mA、0-10V、RS485(Optional)
			N No screen
			D With screen

AIRFLOW VELOCITY TRANSMITTER

SFS 711 AIR FLOW VELOCITY TRANSMITTER

- Utilizes a proprietary full-range secondary calibration method, ensuring excellent linearity and high accuracy.
- Applicable to harsh environments such as ventilation ducts, oil fume ducts, etc.
- Open-hole flange installation, high-quality silicone sealing ring, small air leakage and durable.
- Configurable duct cross-sectional area, real-time airflow volume calculation Transmission.
- Tool-free imported push-in terminal block, allowing quick and secure wiring
DC and AC/DC power supply options, supporting long-distance power distribution.

SPECIFICATION

Measurement range: 0~30m/s(Default)
 Measurement temperature range: -40~80°C(-40~120°C option) (Only for Airflow Velocity & Temperature Transmitter)
 Power input: 10-30VDC(P≤0.5W) or 24V(-20%~+10%)AC/19-30VDC (P≤2.4W)
 Measurement medium: Air, Nitrogen, Oil fume exhaust
 Output signal: Modbus RS-485
 Speed accuracy: ± (0.2M/S+2% of the measured value)
 Temperature accuracy: ±0.5 (25°C) (Only for Airflow Velocity&Temperature Transmitter)



Addable wind temperature control

MODEL SELECTION

SFS-			Airflow Velocity Transmitter
SFST-			Airflow Velocity&Temperature Transmitter
	711-		Integrated Duct Housing Installation
		I20-	4~20mA
		V05-	0~5V
		V10-	0~10V
		485-	RS-485 (ModBus)
			DC-
			AC-
			DC Power Supply
			AC/DC Power Supply
			N
			D
			No screen
			With OLED screen



SASWELL

Small-Caliber

High-Precision

Valves & Actuators



BANLANCING VALVE ACTUATOR

SAS SA905

BANLANCING VALVE ACTUATOR

- Auto-zero self calibration.
- Stroke time 7.5sec/1mm, thrust 160N.
- With 0.9m electric wire.
- The actuator features a compact design with high thrust capability.
- It is equipped with an automatic valve stroke detection function, supporting a maximum stroke of 6mm for precise valve position control.
- Supports Bluetooth communication, allowing users to monitor actuator status and configure settings via a dedicated mobile app.
- It features OTA functionality for remote firmware updates and maintenance.



SPECIFICATION

Power supply: 50Hz or 60Hz, 24V AC/DC, power 1.5W

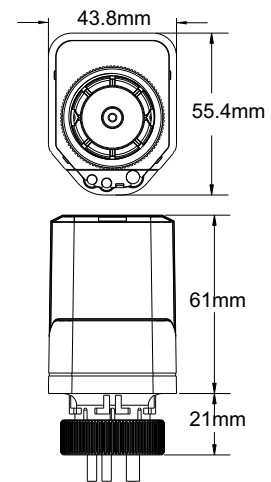
Control signal: 0-10V

Enclosure protection: IP54

Threaded connection: M30x1.5

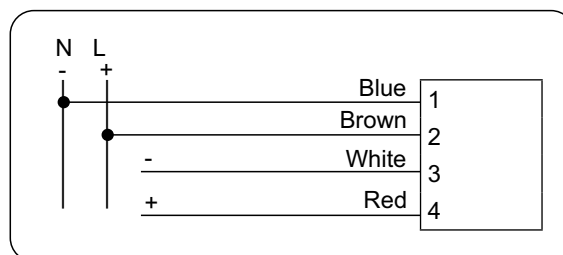
Working ambient temperature: 0°C to +50°C

Working fluid temperature: 0°C to +95°C



WIRING DIAGRAM

Ref.	Designation
N	Wiring to neutral
L	Wiring to phase
-	Wiring to GND
+	Wiring to 0-10V



MODEL SELECTION

Model list	Nominal Force	Voltage	Stroke	Control Signal
SA905-S	80-130N	220V	4.5mm	ON/OFF
SA905-V(24V)	160N	24V	6mm	Modulating 0-10V
SA905-V(220V)	160N	220V	6mm	Modulating 0-10V
SA905-T(220V)	80-130N	220V	4.5mm	Automatic hydronic balancing valve actuator
SA905-T(24V)	80-130N	24V	4.5mm	Automatic hydronic balancing valve actuator

THERMOELECTRIC ACTUATOR

SA95X

- First open function.
- High quality wax element.
- Simple open and close indication.
- Universal M30 x 1.5mm screw thread.

Power supply	100~240VAC 50/60Hz
Power consumption	2W
Stroke	$\geq 4.5 \pm 0.5\text{mm}$
Force	$130\text{N} > F \geq 80\text{N}$
Screw thread	M30 × 1.5mm



SA93

- Visualization of operating status.
- Simple open and close indication.
- High quality wax element.
- Universal M30 x 1.5mm screw thread.

Power supply	100~240VAC 50/60Hz
Power consumption	2W
Stroke	$\geq 4.5 \pm 0.5\text{mm}$
Force	$130\text{N} > F \geq 80\text{N}$
Screw thread	M30 × 1.5mm



SA91

- Simple open and close indication.
- Universal M30 x 1.5mm screw thread.
- High quality wax element.

Power supply	100~240VAC 50/60Hz
Power consumption	2W
Stroke	$\geq 3 \pm 0.5\text{mm}$
Force	$130\text{N} > F \geq 80\text{N}$
Screw thread	M30 × 1.5mm



MOTORIZED BALL VALVE

SAS SV80

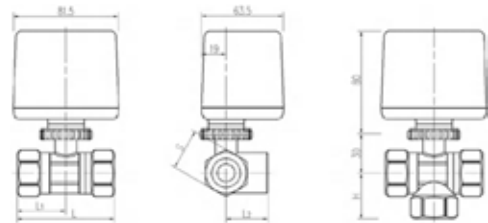
MOTORIZED BALL VALVE

- Differential pressure up to 150psi, it is suitable for HVAC systems with sudden high head pressure with sudden high head pressure.
- Well waterproof and dust proof features (Ip65).
- Actuator installation allows for 2 different wiring orientations thus providing ease of wiring and service.



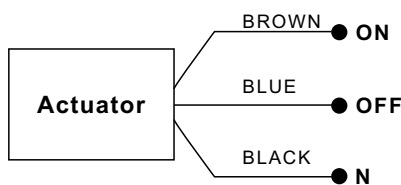
SPECIFICATION

Media: chilled or hot water, 60% glycol
 Flow Characterize: 2-way or 3 ways
 Operating Mode: 3-point control 924VAC0 or on/off
 Power supply: AC110V AC220V, AC230V, AC24V etc.
 Power Consumption: 5W (during valve position change)
 Running Time: 15sec.(50Hz)/12 sec.(60Hz)
 Pipe Fitting: NPT internal thread
 Optional: BSPP external thread
 BSPP internal thread
 Compression external thread

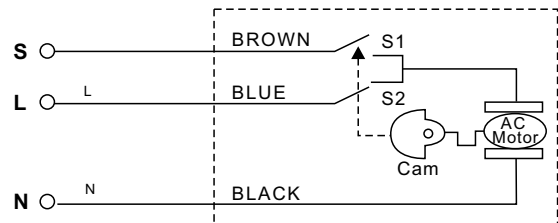


Valve size	Dimensions					Kv Valve
	L(mm)	L1(mm)	L2(mm)	H(mm)	S(mm)	
1/2"	64±1	31.5	31.5	31.5	27	4.62
3/4"	66±1	32.5	32.5	32.5	32	7.5
1"	74±1	36.5	36.5	36.5	40	13.02

WIRING DIAGRAM



Three-Wire two-Control Valve



Three-Wire one-Control Valve

MODEL SELECTION

SV80	Motorized ball valve			24V/220V option
3			3-way Valve	
2			2-way Valve	
	15		DN type:DN15	
	20		DN typeDN20	
	25		DN typeDN25	
	32		DN typeDN32	
		A	Three-Wire one-Control Valve	
		B	Three-Wire two-Control Valve	



LINEAR STROKE VALVE

SAS VB20

LINEAR STROKE VALVE

- PN Pressure: PN25
- Valve Size: DN15~DN25
- Valve Structure: 2-way and 3-way
- Thread: Female
- Actuator Connection: M30 x 1.5MM
- Medium Temperature:-10~120°C
- Material: Brass



Product	Model	Name	DN Type	Kvs	Valve Body Pressure	Closing Differential Pressure	Medium temperature
	VE20-i220	Two-way control valve	DN 20	3.2	1.6	0.5Mpa	0-100°C
	VE20-i225		DN 25	4.6	1.6	0.5Mpa	0-100°C
	VE20-i325	Three-way control valve	DN 25	5.7	1.6	0.5Mpa	0-100°C

ACTUATOR OPTION

SA91		ON/OFF type, Stroke:3mm,NO/NC option
SA93		ON/OFF type, Stroke:4.5mm,NC
SA95X		ON/OFF type, Stroke:4.5mm,NO First open function
SA905-S		ON/OFF type, Stroke:6mm,NO/NC option
SA905-V		Modulating type, Stroke:6mm,Power-off self-resetting, 0-10V control

DYNAMIC BALANCING VALVE WITH PRE-ADJUSTMENT

SAS VB10

DYNAMIC BALANCING VALVE WITH PRE-ADJUSTMENT

- Innovative Control Valve for Heating and Cooling Systems.
- This advanced control valve combines maximum flow presetting, dynamic balancing, and electric modulation into a single unit. With its pressure-independent characteristics (Pressure Independent Control Valve, PICV), it is widely used in heating and cooling systems, including air handling units (AHUs) and heat exchangers.
- The flow rate is regulated solely by the actuator's position, unaffected by system pressure fluctuations.
- This eliminates the need for additional dynamic balancing valves, ensuring full hydraulic balance.
- It is unaffected by system pressure fluctuations and does not interfere with other terminal devices, ensuring both precise comfort control and improved energy efficiency.

SPECIFICATION

Pressure Class: PN25

Valve Size: DN15~DN25

Actuator Connection: M30*1.5MM

Medium Temperature: -10~120°C

Material: Brass

Operating Differential

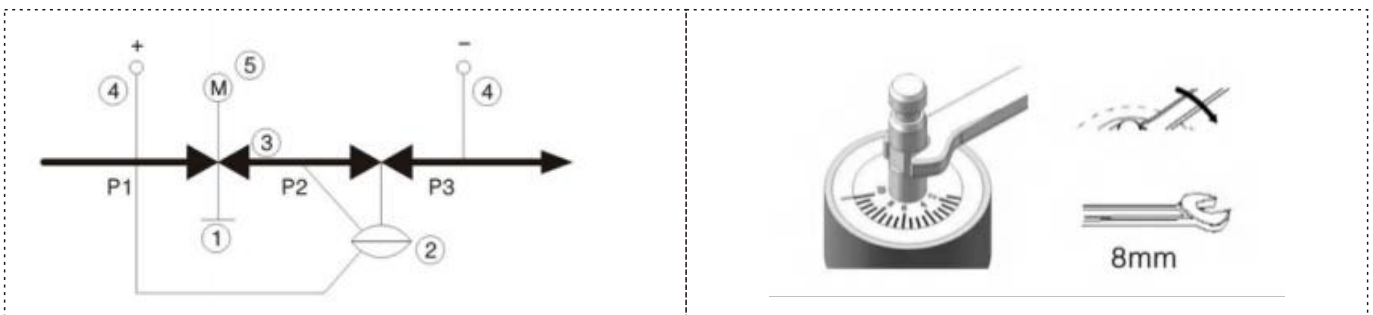
Pressure Range: 30~400 KPa



BASIC MODELS AND SPECIFICATION

Model List	Size	Stoke (mm)	Flow Rate (min) Q(m³/h)	Flow Rate (Max) Q(m³/h)	Connection Way	Thread	PN Class	Test Port	Pressure Differential Range $\Delta P_{min} \sim \Delta P_{min}$ (Kpa)	Medium Temperature (°C)
VB10-P215	DN15	2.5	0.18	0.6	G 1/2in	Female	PN25	Yes	25~400	1-11 0°C
VB10-P220	DN20	2.5	0.3	1.0	G 3/4in	Female	PN25	Yes	30~400	
VB10-P225	DN25	5.5	0.34	1.4	G 1in	Female	PN25	Yes	30~400	

WORKING PRINCIPLE



DYNAMIC BALANCING VALVE

SAS VB11 DYNAMIC BALANCING VALVE

- VB 11 series PICV -Pressure Independent Control valves, widely used in central heating and air conditioning systems, combining maximum flow presetting, dynamic balancing, and motorized valve into one unit.
- Following the command from PLC, DDC and other controllers, it adjusts the valve opening and closing, to realize the flow control.
- The specially designed valve cartridge can ensure that the flow is not affected by pressure fluctuations and is always within the set value range. Thus, the control of terminal equipment is more accurate, comfortable and energy-saving.



SPECIFICATION

Pressure Class: PN25
 Valve Size: DN15~DN25
 Actuator Connection: M30*1.5MM
 Medium Temperature: -10~120°C
 Material: Brass
 Operating Differential
 Pressure Range: 30~400 KPa

TYPE SUMMARY

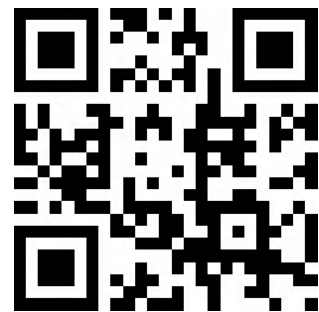
Type	Connections	Test Points	PN Class	Stroke	Medium Temperature	Actuator connection
VB11-i215	Rp 1/2"	With test points	PN 25	Linear 5.0mm	1...120° C	M30X1.5mm
VB11-i220	Rp 3/4"					
VB11-i225	Rp 1"					

ACTUATOR OPTION

SA91		ON/OFF type, Stroke:3mm,NO/NC option
SA93		ON/OFF type, Stroke:4.5mm,NC
SA95X		ON/OFF type, Stroke:4.5mm,NO First open function
SA905-S		ON/OFF type, Stroke:6mm,NO/NC option
SA905-V		Modulating type, Stroke:6mm,Power-off self-resetting, 0-10V control

SASWELL CONTROLS(HONGKONG) LIMITED
SHENZHEN SASWELL TECHNOLOGY INC.

 8675528906113



www.saswell.com